

## Mini Termination Box - LTJ Series (Indoor)



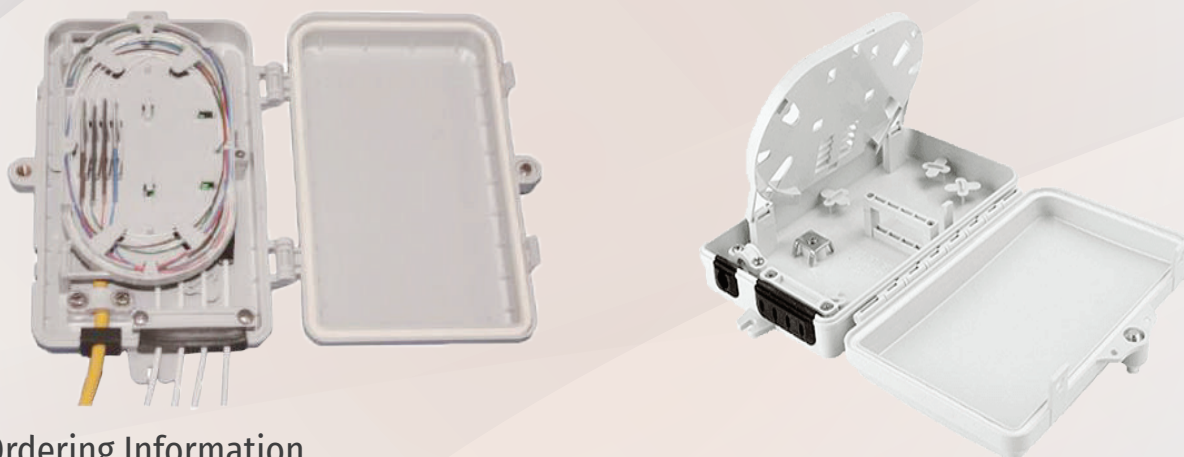
### Features

- Reusable
- Fast installation and easy maintenance design
- Safety lock
- Support SC or LC adaptor application
- ROHS compliance
- Rugged and durable construction for long term reliability (UV resistance)
- Support wall and pole mount applications
- Support loose tube and distribution cables
- Comply with TIA / EIA 568B, Bellcore GR-326, IEC6 0 8 7 4-10, Telcordia, JIS compliance

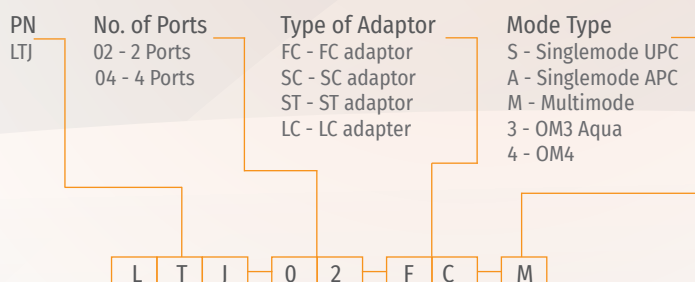
### Specifications

Parameter	Value
Splice Capacity (Max.) - Single	4
No. of Splice Trays (Max.)	1
No. of Adaptors (Max.)	4
No. of Cable Entry Ports (Max.)	1 inlet port, 4 outlet ports
Optic Cable Dimensions (Max.)	1 inlet port (8mm)
Main Material	Plastic
Colour	Light Gray
Product Dimensions (Height)	210mm
(Width)	140mm
(Depth)	40mm

### Product Diagram



### Ordering Information



\* Ordering Code Example