

## Mini Termination Box - LTV Series (Indoor)



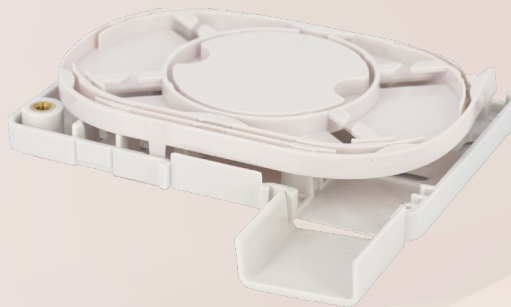
### Features

- Reusable
- Fast installation and easy maintenance design
- Safety lock
- Support SC or LC adaptor application
- ROHS compliance
- Rugged and durable construction for long term reliability (UV resistance)
- Support wall and pole mount applications
- Termination of 1pcs indoor fiber cable / blown fiber up to 8 core.
- Each splice tray has the capacity to store up to 8 shrink down splice protection sleeve (40mm length, 2.2mm diameter)

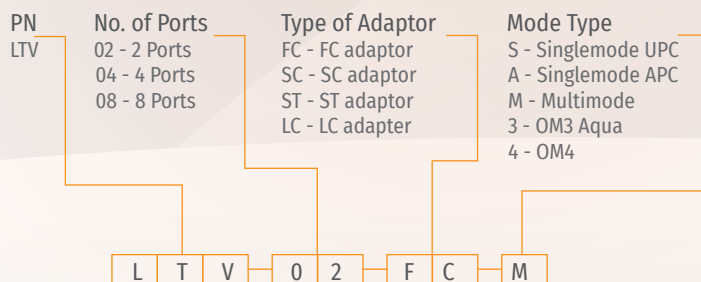
### Specifications

Parameter	Value
Splice Capacity (Max.) - Single	4 Ports (8 LC)
No. of Splice Trays (Max.)	1
No. of Adaptors (Max.)	2
No. of Cable Entry Ports (Max.)	1
Main Material	Plastic
Colour	Light Grey
Product Dimensions (Height)	120mm
(Width)	80mm
(Depth)	24mm

### Product Gallery



### Ordering Information



\* Ordering Code Example