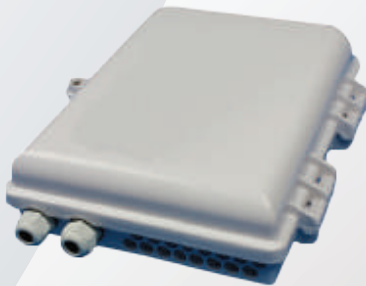


## Mini Termination Box - LTE Series (Outdoor)



### Features

- Reusable
- Fast installation and easy maintenance design
- Safety lock
- Support SC adaptor applications
- Pass IP67 protection
- ROHS compliance
- Support wall and pole mount applications
- Rugged and durable construction for long term reliability (UV resistance)
- Support loose tube and distribution cables
- Bending radius > 30mm
- Comply with TIA / EIA 568B, Bellcore GR-326, IEC6 0 8 7 4-10, Telcordia, JIS compliance

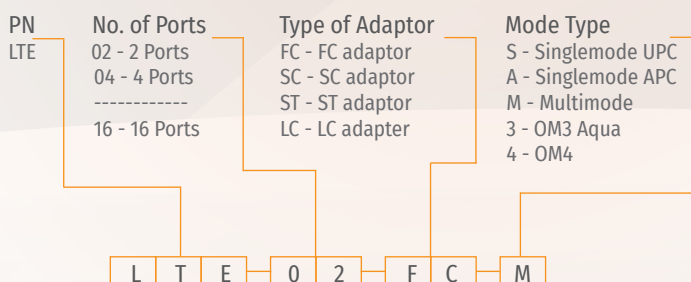
### Specifications

Parameter	Value
Splice Capacity (Max.) - Single	16
No. of Splice Trays (Max.)	2
No. of Adaptors (Max.)	16
No. of Cable Entry Ports (Max.)	2
Optic Cable Dimensions (Max.)	2 (12mm)
Main Material	Plastic (ABS)
Colour	Light Gray
Product Dimensions (Height)	260mm
(Width)	320mm
(Depth)	90mm

### Product Gallery



### Ordering Information



\* Ordering Code Example