

Hybrid Adaptor - Female to Female

Lightem offers a wide variety of adaptor configuration for meeting almost any application. Patching, attaching the two connectors together in perfect alignment condition, is always the critical part of the network. Couplers, hybrid adaptors, male to female type adaptors or bare fiber adaptor are available.

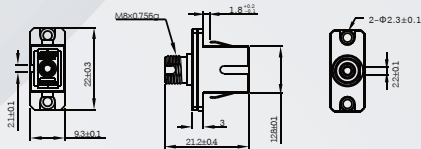
Features

- Premium quality sleeve with precise alignment
- Low insertion loss
- Very broad variety of choices of different hybrid connector combination
- Different ferrule dimension patching possible, such as LC to SC

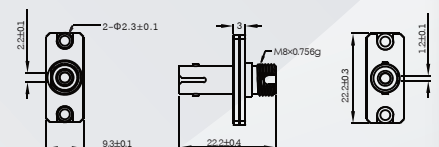
Specifications

Item	Parameter	Singlemode			Multimode
		PC	UPC	APC	
Insertion Loss		≤0.3 dB	≤0.3 dB	≤0.3 dB	≤0.2 dB
Return Loss		≤-40 dB	≤-50 dB	≤-60 dB	/
Durability		0.2 dB Max. Increase			
Operating Temperature		-40°C ~ +85°C			
Standard		Compliant with JISC5974, Bellcore GR-326, IEC61754-4, TIA / EIA 568B, IEC60874-10, Telcordia, JIS compliance			
Type		Female to Female Hybrid Adaptor			

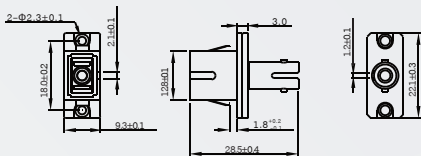
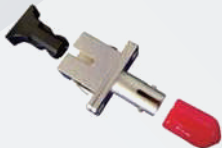
FC - SC Type



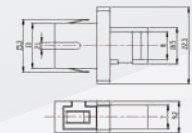
FC - ST Type



SC - ST Type



MU - SC Type



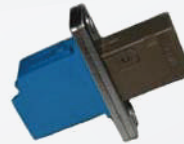
LC - SC Type



FC - DIN Type



MU - LC Type



FC - LC Type



Ordering Information

* Ordering Code Example

