

SC Types



FC Type



Field Termination Connector

Lightem Field Termination Connectors are specially developed for providing a quick and easy termination of fibers in the field or environment where curing termination is not applicable. This connector is TIA/EIA-568-B and TIA/EIA 455 compliant. Both SC and FC types are available in single mode and multi mode. Moreover, a very broad chance of boots for 0.9 mm buffer cable, 3mm cord cable and figure 8 flat cable allows the installer to terminate nearly most of the far end cable types in minutes. Thanks to the slide lock system, three or more re-termination is feasible for assuring optimized performance. More types of connectors are under being developed and will be launched soon.

Features

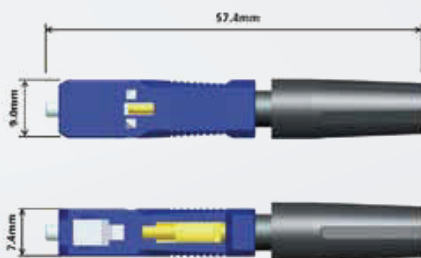
- Factory-installed fiber stub.
- No epoxy or polishing required
- Allows up to three re-termination result
- Quick and easy fiber termination in the field
- Eliminates cable excess length and pigtail splice storage
- Cost effective

Specifications

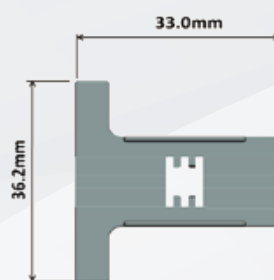
Item	Parameter
Insertion Loss	Max <0.5 dB, Typ < 0.3dB
Fiber type	MM 50 or 62.5/125um
Cable type	900um, 2mm, 3mm Drop fiber and Flat cable
Reference	TIA/EIA-568-B, TIA/EIA 455
Return loss	Min. 50dB (UPC)

Product Diagrams

Product Drawing



Assembled Connector (Figure 1)



Assembly jig (Figure 2)



Composition

No.	ITEM	UNIT	Qty
1	Connector(S-QAC)	EA	1
2	Cap	EA	1
3	Guide tool	EA	1
4	0.9 Rubber	EA	1
5	0.9 Furcation Tube	EA	1



For Ø3.0 and Figure 8 Flat Cable



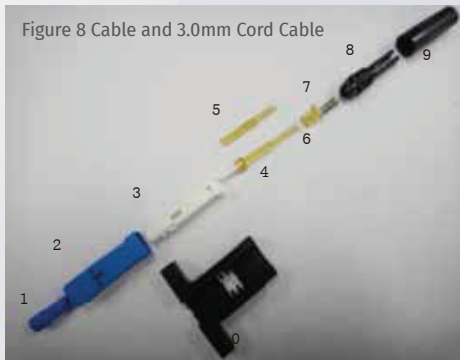
For Ø0.9 Buffer Cable



For Ø0.25 Copated Fiber

For figure 8 cable and 3.0mm cord cable

No.	Product Name	Material	Color
1	S-FERRULE CAP	PBT	Blue(PC)/Green(APC)
2	S-HOUSING-2	PBT	Blue(PC)/Green(APC)
3	S-FRAME-2	PBT	WHITE
4	S-BODY	ULTEM	YELLOW
5	S-FIBER CLAMP	ULTEM	YELLOW
6	S-CLAMP RING	ULTEM	YELLOW
7	S-SPRING	SUS	-
8	S-STOPPER-2	NYLON	BLACK
9	S-CAP	NYLON	BLACK
10	S-ASSEMBLY JIG-2	PP	BLACK



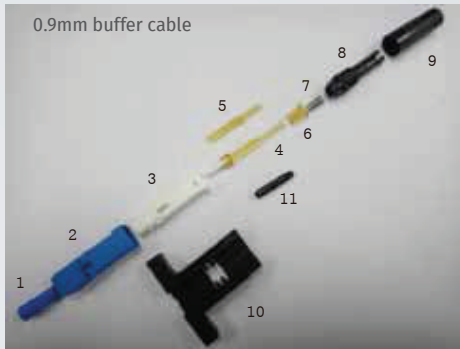
3.0mm Cord Cable



Figure 8 Cable

For 0.9mm buffer cable

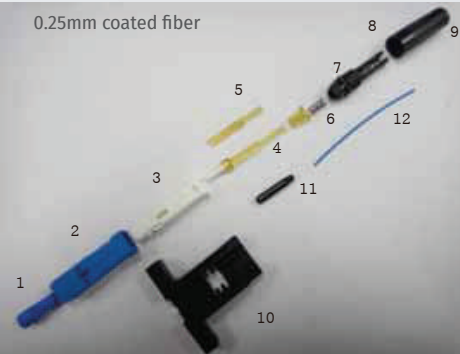
No.	Product Name	Material	Color
1	S-FERRULE CAP	PBT	Blue(PC)/Green(APC)
2	S-HOUSING-2	PBT	Blue(PC)/Green(APC)
3	S-FRAME-2	PBT	WHITE
4	S-BODY	ULTEM	YELLOW
5	S-FIBER CLAMP	ULTEM	YELLOW
6	S-CLAMP RING	ULTEM	YELLOW
7	S-SPRING	SUS	-
8	S-STOPPER-2	NYLON	BLACK
9	S-CAP	NYLON	BLACK
10	S-ASSEMBLY JIG-2	PP	BLACK
11	Ø0.9mm Rubber	Rubber	BLACK



Ø0.9mm Rubber

For 0.25mm coated fiber

No.	Product Name	Material	Color
1	S-FERRULE CAP	PBT	Blue(PC)/Green(APC)
2	S-HOUSING-2	PBT	Blue(PC)/Green(APC)
3	S-FRAME-2	PBT	WHITE
4	S-BODY	ULTEM	YELLOW
5	S-FIBER CLAMP	ULTEM	YELLOW
6	S-CLAMP RING	ULTEM	YELLOW
7	S-SPRING	SUS	-
8	S-STOPPER-2	NYLON	BLACK
9	S-CAP	NYLON	BLACK
10	S-ASSEMBLY JIG-2	PP	BLACK
11	Ø0.9mm Rubber	Rubber	BLACK
12	0.9 Furcation tube	PVC, Hytrel	BLUE



0.25 Furcation Tube



0.25 Furcation Tube

Performance Test Parameters

Item	Conditon	Failure criteria to be checked	Typical	Max
Product Performance	Insertion Loss(IL)	Concatenation Method	<0.3dB	<0.5dB
	Return Loss(RL)	Coupler with power source and meter	-	>40dB
MechanicalTests	Vibration	3 axes 2hr/axis	Changed in IL before and after test	<0.1dB
		1.52mm (peak-peak)		
	Tensile	10 to 55Hz (45Hz/min)	Changed in IL before and after test	<0.1 dB
		0.9 mm cord (0.5kg)		
Impact	3.0 mm cord (2kg)	Changed in IL before and after test	<0.1 dB	
	Flat cable (1kg), 60sec			
Environmental Tests	Durability	1 impact from 4 meter (height)	Changed in IL before and after test	<0.2 dB
		100 repetition of connecting/disconnecting		
	Temperature cycling	Lowest temperature: (-40+/-2)°C	Changed in IL during and after test	<0.4dB
		Highest temperature: (+75+/-2) °C		
Humidity Tests	Dwell time: 1hr	Appearance before and after test	No defects	
	Transition time: 1hr			
	Number of cycles: 21			
	4days at 40 +/-2°CRH 90-95%			
Humidity Tests	4days at 40 +/-2°CRH 90-95%	Changed in IL during and after test	<0.3dB	<0.5 dB
		RL during test	-	>35 dB(PC)
		Appearance before and after test	No defects	
				>45 dB(APC)

Ordering Information

* Ordering Code Example

