

## SC Types



## FC Type



## Field Termination Connector

Lightem Field Termination Connectors are specially developed for providing a quick and easy termination of fibers in the field or environment where curing termination is not applicable. This connector is TIA/EIA-568-B and TIA/EIA 455 compliant. Both SC and FC types are available in single mode and multi mode. Moreover, a very board chance of boots for 0.9 mm buffer cable, 3 mm cord cable and the figure 8 flat cable allows the installer to terminate nearly most of the far end cable types in minutes. Thanks to the slide lock system, three or more re-termination is feasible for assuring optimized performance. More types of connectors are under being developed and will be launched soon.

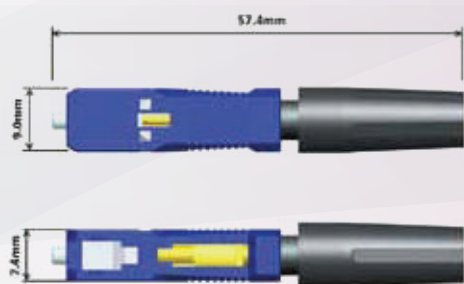
## Features

- Factory-installed fiber stub.
- No epoxy or polishing required
- Allows up to three re-termination result
- Quick and easy fiber termination in the field
- Eliminates cable excess length and pigtail splice storage
- Cost effective

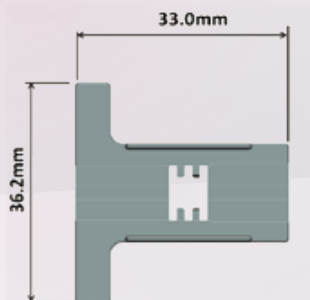
## Specifications

Parameter	Value
Insertion Loss	Max < 0.5 dB, Typ < 0.3dB
Fiber Type	SM 9 /125um or MM 50 or 62.5/125um
Cable Type	900um, 2 mm, 3 mm Drop fiber and Flat cable
Reference	TIA/EIA-568-B, T IA/EIA 4 55
Return Loss	Min. 5 0dB (U PC)

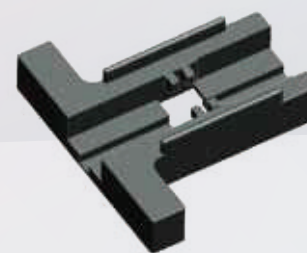
## Product Drawing



Assembled Connector (Figure 1)

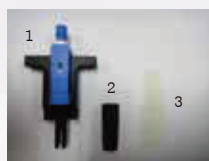


Assembly jig (Figure 2)



## Composition

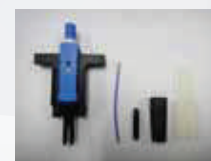
No	Item	Unit	Qty
1	Connector(S-QAC)	EA	1
2	Cap	EA	1
3	Guide tool	EA	1
4	Ø 0.9 Rubber	EA	1
5	0.9 Furcation Tube	EA	1



For Ø3.0 and Figure 8 Flat Cable



For Ø0.9 Buffer Cable



For Ø0.25 Copated Fiber

### For figure 8 cable and 3.0mm cord cable

No.	Product Name	Material	Color
1	S-FERRULE CAP	PBT	Blue(PC)/Green(APC)
2	S-HOUSING-2	PBT	Blue(PC)/Green(APC)
3	S-FRAME-2	PBT	WHITE
4	S-BODY	ULTEM	YELLOW
5	S-FIBER CLAMP	ULTEM	YELLOW
6	S-CLAMP RING	ULTEM	YELLOW
7	S-SPRING	SUS	-
8	S-STOPPER-2	NYLON	BLACK
9	S-CAP	NYLON	BLACK
10	S-ASSEMBLY JIG-2	PP	BLACK

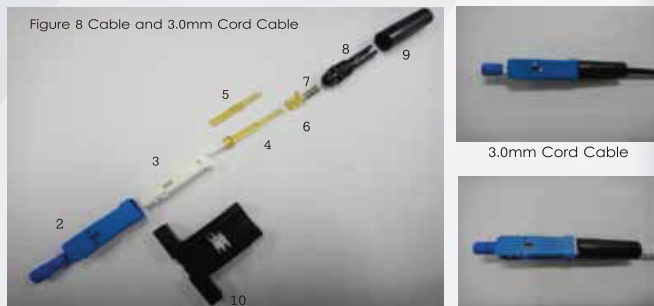
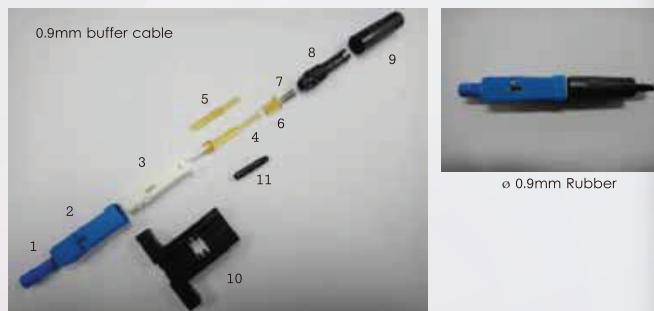


Figure 8 Cable

### For 0.9mm buffer cable

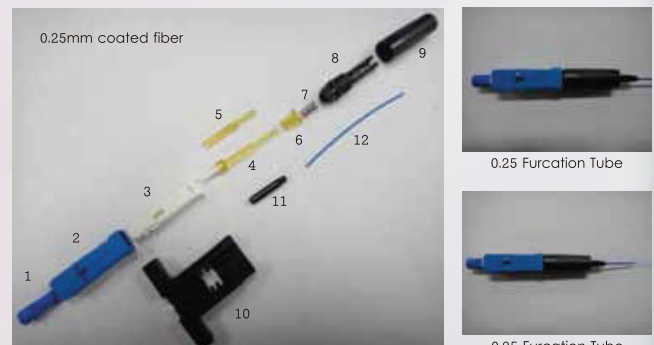
No.	Product Name	Material	Color
1	S-FERRULE CAP	PBT	Blue(PC)/Green(APC)
2	S-HOUSING-2	PBT	Blue(PC)/Green(APC)
3	S-FRAME-2	PBT	WHITE
4	S-BODY	ULTEM	YELLOW
5	S-FIBER CLAMP	ULTEM	YELLOW
6	S-CLAMP RING	ULTEM	YELLOW
7	S-SPRING	SUS	-
8	S-STOPPER-2	NYLON	BLACK
9	S-CAP	NYLON	BLACK
10	S-ASSEMBLY JIG-2	PP	BLACK
11	Ø 0.9mm Rubber	Rubber	BLACK



Ø 0.9mm Rubber

### For 0.25mm coated fiber

No.	Product Name	Material	Color
1	S-FERRULE CAP	PBT	Blue(PC)/Green(APC)
2	S-HOUSING-2	PBT	Blue(PC)/Green(APC)
3	S-FRAME-2	PBT	WHITE
4	S-BODY	ULTEM	YELLOW
5	S-FIBER CLAMP	ULTEM	YELLOW
6	S-CLAMP RING	ULTEM	YELLOW
7	S-SPRING	SUS	-
8	S-STOPPER-2	NYLON	BLACK
9	S-CAP	NYLON	BLACK
10	S-ASSEMBLY JIG-2	PP	BLACK
11	Ø 0.9mm Rubber	Rubber	BLACK
12	0.9 Furcation tube	PVC, Hytrel	BLUE



0.25 Furcation Tube

0.25 Furcation Tube

## Performance Test Parameters

Item	Condition	Failure Criteria to be checked	Typical	Max.	
Product Performance	Insertion Loss (IL)	Concatenation Method	InsertionLoss (IL)	<0.3dB	<0.5dB
	Return Loss (RL)	Coupler with power source and meter	Return Loss(RL)	-	> 40dB (PC) > 55dB (APC)
Mechanical Tests	Vibration	3 axes 2hr/axis, 1.52mm (peak-peak), 10 to 55Hz (45Hz/min)	Changed in IL before and after test	<0.1dB	<0.2dB
	Tensile	0.9 mm cord (0.5kg) 3.0 mm cord (2kg) Flat cable (1kg), 60sec	Changed in IL before and after test	<0.1dB	<0.2dB
Environmental Tests	Impact	1 impact from 4 meter (height)	Changed in IL before and after test	<0.1dB	<0.2dB
	Durability	100 repetition of connecting/disconnecting	Changed in IL before and after test	<0.1dB	<0.2dB
	Temperature Cycling	Lowest temperature: (-40+/-2)° C Highest temperature: (+75+/-2)° C Dwell time: 1hr Transition time: 1hr Number of cycles: 21	Changed in IL during and after test	<0.4dB	<0.5dB
	Humidity Test	4days at 40 +/-2° C, RH 90-95%	Changed in IL during and after test	<0.3dB	<0.5dB
		RL during test		> 35dB (PC)	
		Appearance before and after test		No defects	
		RL during test		> 35dB (PC) > 45dB (APC)	
		Appearance before and after test		No defects	

## Ordering information

---

\* Ordering code example

